

Page: 1 of 2

PowerPlay Airbag Test Report

Main Page

Test File Path: C:\Documents and Settings\amy\Desktop\Test Data Sample\Market\Inq Airbag\Honda airbag in

Test ID: 011108-1638-(Acceptance test No 1).TST 75.6 °F Ambient Temperature: Ambient Humidity: 35 %RH

Serial Number: N/A Module Type: N/A Initiator Serial Number:

Acceptance test # 1 Operator: MICROSYS Module Temperature: MTT A Test Number: Start of Test: 09/08/2007 - 04:38 PM Ready to test. Comments: Post Deploy Comments: Success test 1

GRAPH 1 NAME		GRAPH 3 NAME	
011108-1638-Squib 1 Current Sense		011108-1638-Squib 1 Voltage Sense	
DETAILS OF GRAPH 1		DETAILS OF GRAPH 2	
UNIT	UNIT	UNIT	UNIT
Y / A	X / SEC	Y / V	X / SEC

Graph 1

Graph 2

COMMENTS

Sqp #1 Voltage sensor readings.

GRAPH 4 NAME	
011108-1638-Squib 2 Voltage Sense	
DETAILS OF GRAPH 4	
UNIT	UNIT
Y / A	X / SEC

PowerPlay™ Test Analysis Software

- Compare multiple tests, camera views & sensor data, all time synchronized
- Sophisticated image enhancement and AVI creation tools
- Combine multiple video & sensor windows to create a single “multi-window“ AVI file
- Customizable test reports

PowerPlay™ Test Analysis Software

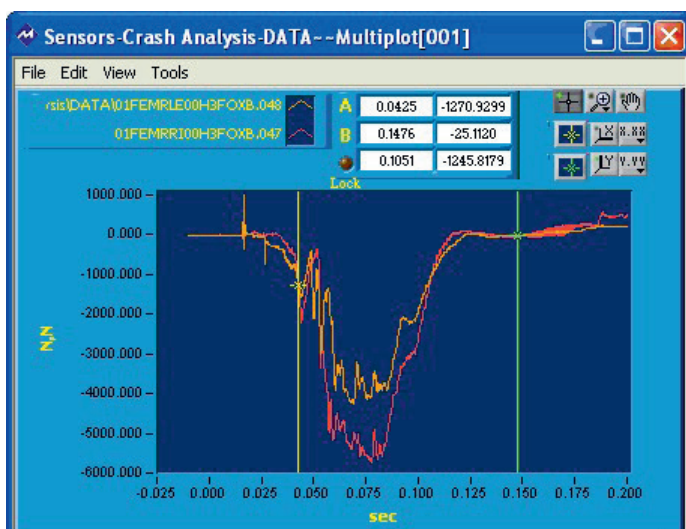
Description

Microsys PowerPlay software is a powerful data analysis and data processing tool. It can be used for post processing and automated reporting.

Specifications

- Synchronized video data and sensor data playback
- Unlimited number of video windows and sensor windows
- Report generation using Excel templates
- Search and recall of test data from the SureFire test results database

Performance: Sensor Functions



- Single trace graphs, multiple trace graphs; X vs. Y graphs
- Adjust X & Y axis format and precision, graph ranges
- Time clip sensor files to remove unneeded data
- Time zero adjustment
- Dual cursors with time and amplitude readouts
- Import and export to DIAdem Real 64 data format
- Sensor file types supported: CSV and ISO-13499

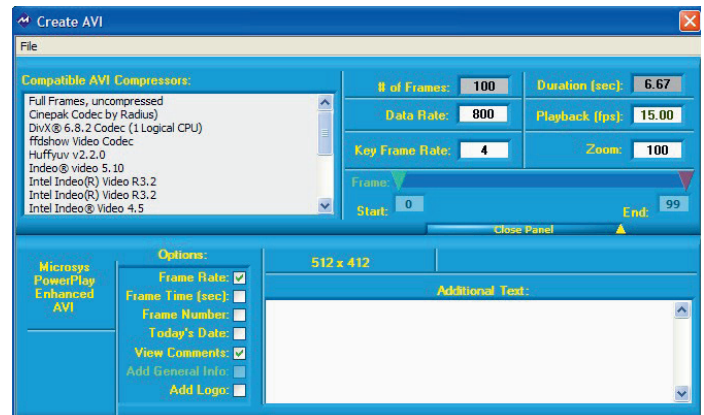
Math functions:

- SAE J211 filters, integration, differentiation, SQ, SQ RT, Power, EXP, INV, LN, ABS, SIN/ASIN, COS/ACOS, TAN/ATAN
- Constants: +, -, x, ÷

Statistics:

- minimum, maximum and average for total time or displayed time

Performance: Video



- Enhance images by adjusting red, green, blue, brightness, contrast, gamma
- Single click white balance
- Save & recall of image enhancement settings
- Image sharpen, soften, edge detection and edge enhancement
- AVI creation: set start & end frames, region of interest, control size, quality and play speed



- Enhanced AVI creation: add an information banner, comments and logo to the AVI file
- Create multi-window AVIs that combine multiple video and sensor graphs into a single AVI file (with the Multi-Window AVI toolkit)
- Batch AVI file creation
- AVI to single image conversion
- Calibrated linear and angular image measurements
- Image rotation
- Region of interest zoom: Size zoom -25% to +1000%
- Export of image enhanced frames
- Time zero (T0) adjustments for video and sensor data
- Video file types supported:
 - JPEG, TIFF, AVI, BYR, MPG, BMP, GIF, CIN